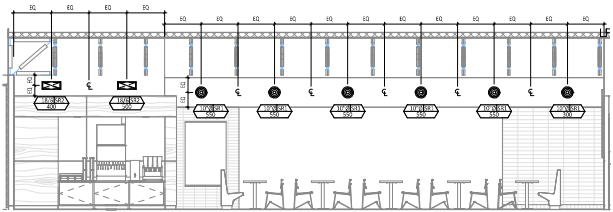


**HVAC PLAN NOTES**

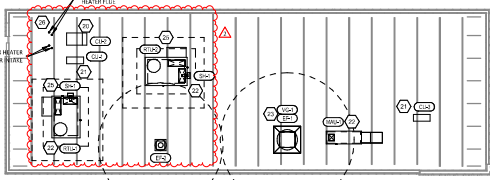
1. SEE ARCHITECTURAL REFLECTED CEILING PLAN FOR CALLING WORKED EQUIPMENT LOCATION TYPICAL.
2. FABRIC DUCTWORK MUST BE THROUGH DINING ROOM SUPPLY REGISTERS AND RETURN GRILLE; BLACK, TYPICAL.
3. PROVIDE SUPPLY AIR FLOW THROUGH ROOM SUPPLY REGISTERS AND RETURN GRILLE. PROVIDE A 6" AIR PROOFED GASKET DETECTOR MOUNTED IN THE RETURN AIR STREAM. INTERLOCK SMOKE DETECTOR TO BURNER OPERATION.
4. 3/4" DIA DUCT UP FOR TRANSITION TO RTU-2 RETURN CONNECTION IN ROOF CURB. RTU-2 SHALL HAVE A 6" AIR PROOFED GASKET DETECTOR MOUNTED IN THE RETURN AIR STREAM. INTERLOCK SMOKE DETECTOR TO BURNER OPERATION.
5. 2 1/2" DIA DUCT UP FROM BUILDING SUPPLY TO RTU-2 SUPPLY CONNECTION. TRANSITION IN ROOF CURB.
6. 1/4" DIA DUCT UP THROUGH ROOF. TRANSITION TO MAIN SUPPLY CONNECTION IN ROOF CURB.
7. 2 1/2" DIA DUCT UP FROM ROOF TO RTU-2. COMPLIANT WITH NFPA 96, PROVIDE HARDWARE ELBOWS WITH AN INSIDE RADIUS OF 0.5W AT ELBOWS IN GREASE DUCT.
8. 1/4" DIA DUCT UP THROUGH ROOF. 10" DIA 2"
9. 2 1/2" DIA DUCT DOWN TO MAKE UP AIR PIP DUCT CONNECTION. TRANSITION TO SUPPLY PLENUM OPENING SIZE. TYPICAL. SEE 2.
10. 2 1/2" DIA DUCT DOWN TO MAKE UP AIR PIP DUCT CONNECTION. TRANSITION TO SUPPLY PLENUM OPENING SIZE. TYPICAL. SEE 2.
11. INSTALL GROUNDING THE ENERGIES FURNISHED BY ITEMS FOR RTU-1 AND RTU-2 AT THIS LOCATION AT 6" AFF. COORDINATE WITH ELECTRICAL SWITCHING IN THIS AREA. PROVIDE WIRING AS SHOWN IN DETAIL. SEE 20.
12. INSTALL GROUNDING ZONE SENSOR MODULE FURNISHED BY ITEMS FOR RTU-1 AT THIS LOCATION 60" AFF. BRACKET TO WALL AND FUNCTION FROM COORDINATE LOCATION WITH EQUIPMENT. PROVIDE WIRING AS SHOWN IN DETAIL. SEE 20.
13. INSTALL GROUNDING ZONE SENSOR MODULE FURNISHED BY ITEMS FOR RTU-2 AT THIS LOCATION 60" AFF. BRACKET TO WALL AND FUNCTION FROM COORDINATE LOCATION WITH EQUIPMENT. PROVIDE WIRING AS SHOWN IN DETAIL. SEE 20.
14. INSTALL GROUNDING SUPPLY PROBE FURNISHED BY ITEMS FOR RTU-1 IN THE SUPPLY DUCTWORK UP STREAM FROM THE FIRST BRANCH CONNECTION. PROVIDE WIRING AS SHOWN IN DETAIL. SEE 20.
15. INSTALL GROUNDING SUPPLY PROBE FURNISHED BY ITEMS FOR RTU-2 IN THE SUPPLY DUCTWORK UP STREAM FROM THE FIRST BRANCH CONNECTION. PROVIDE WIRING AS SHOWN IN DETAIL. SEE 20.
16. INSTALL BRAND'S TEMPERATURE SENSOR FOR HODD #3 AT THIS LOCATION ON AFF. COORDINATE LOCATION WITH EQUIPMENT. PROVIDE WIRING AS SHOWN IN DETAIL. SEE 20.
17. INSTALL BRAND'S TEMPERATURE SENSOR FOR HODD #4 AT THIS LOCATION ON AFF. COORDINATE LOCATION WITH EQUIPMENT. PROVIDE WIRING AS SHOWN IN DETAIL. SEE 20.
18. INSTALL BRAND'S TEMPERATURE SENSOR FOR HODD #5 AT THIS LOCATION ON AFF. COORDINATE LOCATION WITH EQUIPMENT. PROVIDE WIRING AS SHOWN IN DETAIL. SEE 20.
19. INSTALL BRAND'S TEMPERATURE SENSOR FOR HODD #6 AT THIS LOCATION ON AFF. COORDINATE LOCATION WITH EQUIPMENT. PROVIDE WIRING AS SHOWN IN DETAIL. SEE 20.
19. PROVIDE SUPPLY REGISTERS SO THAT SUPPLY AIR INTAKE WALS ON OPPOSITE SIDE OF ROOM AT APPROXIMATELY 7' AFF WITH NO DRAFTS FELT IN THE DINING ROOM.

**HVAC PLAN NOTES**

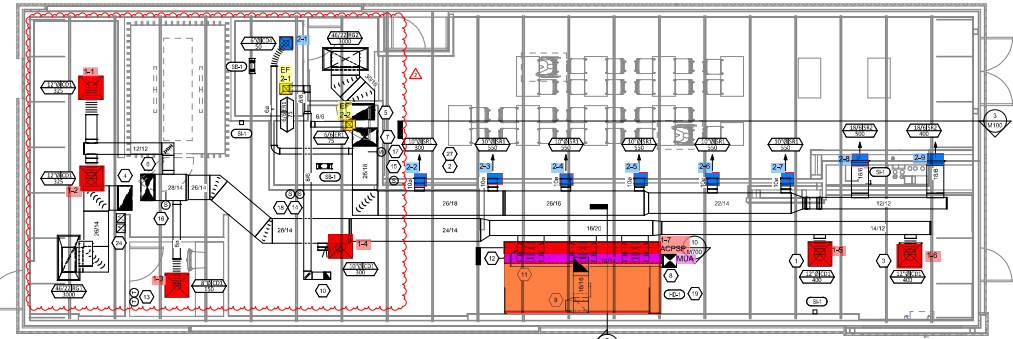
19. PROVIDE RETURN HOODS FOR ALL SUPPLY HOODS PER MANUFACTURER'S INSTALLATION INSTRUCTIONS AND AS DETAILED IN THE ARCHITECTURAL AND STRUCTURAL DRAWINGS. INSTALL HOODS ACCORDING TO THE REQUIREMENTS OF LISTING OR COMPLIANCE WITH NFPA 96, THE BUILDING CODE, AND APPLICABLE HAVING A RESECTION. HOOD SHALL HAVE AN INTEGRAL DUCT CAP THROUGHOUT THE ENTIRE LENGTH OF THE HOOD. PROVIDE HARDWARE ELBOWS AND MAKEUP AIR FANS IF COOKING TEMPERATURES ARE DETECTED. EXHAUST DUCT SYSTEM TO BE WELDED OR FACTORY MANUFACTURED WATER AND AIR TIGHT. INSTALL 6" DIA. PER CODE AND AS SHOWN. INSTALL HOODS PER DETAILS 2, 4, AND 5 ABOVE. CHOPUS WILL PROVIDE AN INDEPENDENT TESTING AGENCY FOR TESTING THE INTEGRITY OF THE GREASE DUCT SYSTEM.
20. INSTALL REMOTE CONDENSING UNIT FOR MAKE UP COOLING ON ROOF AS DETAILED IN THE ARCHITECTURAL AND STRUCTURAL DRAWINGS. INSTALL REFRIGERANT LINE SET. THE REFRIGERANT EXPANSION VALVE, SOLENOID VALVE, TEMPERATURE CONTROL, SIGHT GLASS, FILTER DRIER, PRESSURE CONTROL, LOW AMBIENT CONTROL AND WEATHERPROOF HOUSING, TRAP AND SIGHT GLASS. TEMPORARY LINES PER MANUFACTURER'S RECOMMENDATIONS. INSTALL ON SMALL COMPART WITH ANHANG/AS PROVIDED IN. INSTALL THE REFRIGERANT LINE SET UNDER THE ROOF DECK TO WITHIN 3' OF THE CONDENSING UNIT. CUT 1/2" TYP. IN MAKE UP COOLER ROOF FOR REFRIGERANT LINE SET AND SEAL PER THE COOLER MANUFACTURER'S INSTALLATION INSTRUCTIONS WITH LINE SET PER ALLOW.
21. INSTALL REMOTE CONDENSING UNIT FOR MAKE UP COOLING ON ROOF AS DETAILED IN THE ARCHITECTURAL AND STRUCTURAL DRAWINGS. INSTALL REFRIGERANT LINE SET. THE REFRIGERANT EXPANSION VALVE, SOLENOID VALVE, TEMPERATURE CONTROL, SIGHT GLASS, FILTER DRIER, PRESSURE CONTROL, LOW AMBIENT CONTROL AND WEATHERPROOF HOUSING, TRAP AND SIGHT GLASS. TEMPORARY LINES PER MANUFACTURER'S RECOMMENDATIONS. INSTALL ON SMALL COMPART WITH ANHANG/AS PROVIDED IN. INSTALL THE REFRIGERANT LINE SET UNDER THE ROOF DECK TO WITHIN 3' OF THE CONDENSING UNIT. CUT 1/2" TYP. IN MAKE UP COOLER ROOF FOR REFRIGERANT LINE SET AND SEAL PER THE COOLER MANUFACTURER'S INSTALLATION INSTRUCTIONS WITH LINE SET PER ALLOW.
22. INSTALL ROOFTOP EQUIPMENT PER MANUFACTURER'S INSTALLATION INSTRUCTIONS AND AS DETAILED IN THE ARCHITECTURAL AND STRUCTURAL DRAWINGS.
23. INSTALL BRAND'S UNIT. PER DETAIL. SAVED AND AS DETAILED IN THE ARCHITECTURAL AND STRUCTURAL DRAWINGS. INSTALL GLASS INSULATION SYSTEM AS SHOWN IN DETAIL. ON EXHAUST FAN. SEE 20.
24. PROVIDE AMBUSHMAN BRAND SMOKE DETECTOR/ANNUNCIATOR WITH REMOTE KIT OPERATED ROOF. WIRE A UNIT BACK TO EACH SMOKE DETECTOR MOUNT UNIT 60" AFF. TYPICAL.
25. INSTALL BRAND'S UNIT. PER DETAIL. SAVED AND AS DETAILED IN THE ARCHITECTURAL AND STRUCTURAL DRAWINGS. INSTALL GLASS INSULATION SYSTEM AS SHOWN IN DETAIL. ON EXHAUST FAN. SEE 20.
26. MAINTAIN 1" OF CLEARANCE BETWEEN WATER HEATER FLEX TERMINATION AND OUTSIDE AIR INTAKE. MAINTAIN 6" OF CLEARANCE BETWEEN WATER HEATER COMBUSTION AIR INTAKE AND EXHAUST FAN. SEE 20. DISCHARGE. SEE PLUMBING DRAWINGS FOR MORE INFORMATION ON WATER HEATER FLEX AND COMBUSTION AIR TERMINATIONS.
27. PROVIDE SUPPLY REGISTERS SO THAT SUPPLY AIR INTAKE WALS ON OPPOSITE SIDE OF ROOM AT APPROXIMATELY 7' AFF WITH NO DRAFTS FELT IN THE DINING ROOM.



**HVAC DINING ROOM SECTION**  
1/4" = 1'-0"



**HVAC ROOF PLAN**  
1/4" = 1'-0"



**HVAC FLOOR PLAN**  
1/4" = 1'-0"

**NATIONAL**  
4630 Trileman Blvd, Suite 250  
Hilliard, Ohio 43026  
Phone: (614) 751-8610  
Fax: (614) 552-5240  
Contact: Cliff Kijar  
(614) 528-2035  
ckijar@nationalengineering.com

FOR CONSTRUCTION

**CHIPOTLE MEXICAN GRILL**  
CHILDREN'S RESTAURANT, INC.  
10000 W. WILSON AVENUE  
COLUMBUS, OH 43224  
WILSON CENTER  
WILSON, OH 43091

STORE NO.: 4870  
WALNUT HILLS, OH  
10000 WILSON CENTER  
CINCINNATI, OH 45226

Revision	Description	Drawn By
1	ISSUED FOR CONSTRUCTION	CK
2	ISSUED FOR CONSTRUCTION	CK
3	ISSUED FOR CONSTRUCTION	CK
4	ISSUED FOR CONSTRUCTION	CK
5	ISSUED FOR CONSTRUCTION	CK
6	ISSUED FOR CONSTRUCTION	CK
7	ISSUED FOR CONSTRUCTION	CK
8	ISSUED FOR CONSTRUCTION	CK
9	ISSUED FOR CONSTRUCTION	CK
10	ISSUED FOR CONSTRUCTION	CK
11	ISSUED FOR CONSTRUCTION	CK
12	ISSUED FOR CONSTRUCTION	CK
13	ISSUED FOR CONSTRUCTION	CK
14	ISSUED FOR CONSTRUCTION	CK
15	ISSUED FOR CONSTRUCTION	CK
16	ISSUED FOR CONSTRUCTION	CK
17	ISSUED FOR CONSTRUCTION	CK
18	ISSUED FOR CONSTRUCTION	CK
19	ISSUED FOR CONSTRUCTION	CK
20	ISSUED FOR CONSTRUCTION	CK
21	ISSUED FOR CONSTRUCTION	CK
22	ISSUED FOR CONSTRUCTION	CK
23	ISSUED FOR CONSTRUCTION	CK
24	ISSUED FOR CONSTRUCTION	CK
25	ISSUED FOR CONSTRUCTION	CK
26	ISSUED FOR CONSTRUCTION	CK
27	ISSUED FOR CONSTRUCTION	CK
28	ISSUED FOR CONSTRUCTION	CK
29	ISSUED FOR CONSTRUCTION	CK
30	ISSUED FOR CONSTRUCTION	CK
31	ISSUED FOR CONSTRUCTION	CK
32	ISSUED FOR CONSTRUCTION	CK
33	ISSUED FOR CONSTRUCTION	CK
34	ISSUED FOR CONSTRUCTION	CK
35	ISSUED FOR CONSTRUCTION	CK
36	ISSUED FOR CONSTRUCTION	CK
37	ISSUED FOR CONSTRUCTION	CK
38	ISSUED FOR CONSTRUCTION	CK
39	ISSUED FOR CONSTRUCTION	CK
40	ISSUED FOR CONSTRUCTION	CK
41	ISSUED FOR CONSTRUCTION	CK
42	ISSUED FOR CONSTRUCTION	CK
43	ISSUED FOR CONSTRUCTION	CK
44	ISSUED FOR CONSTRUCTION	CK
45	ISSUED FOR CONSTRUCTION	CK
46	ISSUED FOR CONSTRUCTION	CK
47	ISSUED FOR CONSTRUCTION	CK
48	ISSUED FOR CONSTRUCTION	CK
49	ISSUED FOR CONSTRUCTION	CK
50	ISSUED FOR CONSTRUCTION	CK
51	ISSUED FOR CONSTRUCTION	CK
52	ISSUED FOR CONSTRUCTION	CK
53	ISSUED FOR CONSTRUCTION	CK
54	ISSUED FOR CONSTRUCTION	CK
55	ISSUED FOR CONSTRUCTION	CK
56	ISSUED FOR CONSTRUCTION	CK
57	ISSUED FOR CONSTRUCTION	CK
58	ISSUED FOR CONSTRUCTION	CK
59	ISSUED FOR CONSTRUCTION	CK
60	ISSUED FOR CONSTRUCTION	CK
61	ISSUED FOR CONSTRUCTION	CK
62	ISSUED FOR CONSTRUCTION	CK
63	ISSUED FOR CONSTRUCTION	CK
64	ISSUED FOR CONSTRUCTION	CK
65	ISSUED FOR CONSTRUCTION	CK
66	ISSUED FOR CONSTRUCTION	CK
67	ISSUED FOR CONSTRUCTION	CK
68	ISSUED FOR CONSTRUCTION	CK
69	ISSUED FOR CONSTRUCTION	CK
70	ISSUED FOR CONSTRUCTION	CK
71	ISSUED FOR CONSTRUCTION	CK
72	ISSUED FOR CONSTRUCTION	CK
73	ISSUED FOR CONSTRUCTION	CK
74	ISSUED FOR CONSTRUCTION	CK
75	ISSUED FOR CONSTRUCTION	CK
76	ISSUED FOR CONSTRUCTION	CK
77	ISSUED FOR CONSTRUCTION	CK
78	ISSUED FOR CONSTRUCTION	CK
79	ISSUED FOR CONSTRUCTION	CK
80	ISSUED FOR CONSTRUCTION	CK
81	ISSUED FOR CONSTRUCTION	CK
82	ISSUED FOR CONSTRUCTION	CK
83	ISSUED FOR CONSTRUCTION	CK
84	ISSUED FOR CONSTRUCTION	CK
85	ISSUED FOR CONSTRUCTION	CK
86	ISSUED FOR CONSTRUCTION	CK
87	ISSUED FOR CONSTRUCTION	CK
88	ISSUED FOR CONSTRUCTION	CK
89	ISSUED FOR CONSTRUCTION	CK
90	ISSUED FOR CONSTRUCTION	CK
91	ISSUED FOR CONSTRUCTION	CK
92	ISSUED FOR CONSTRUCTION	CK
93	ISSUED FOR CONSTRUCTION	CK
94	ISSUED FOR CONSTRUCTION	CK
95	ISSUED FOR CONSTRUCTION	CK
96	ISSUED FOR CONSTRUCTION	CK
97	ISSUED FOR CONSTRUCTION	CK
98	ISSUED FOR CONSTRUCTION	CK
99	ISSUED FOR CONSTRUCTION	CK
100	ISSUED FOR CONSTRUCTION	CK

**M100**